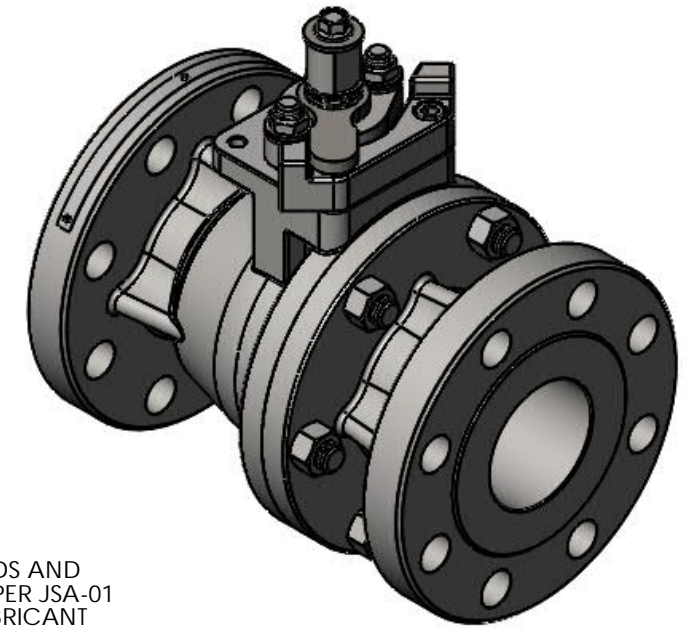
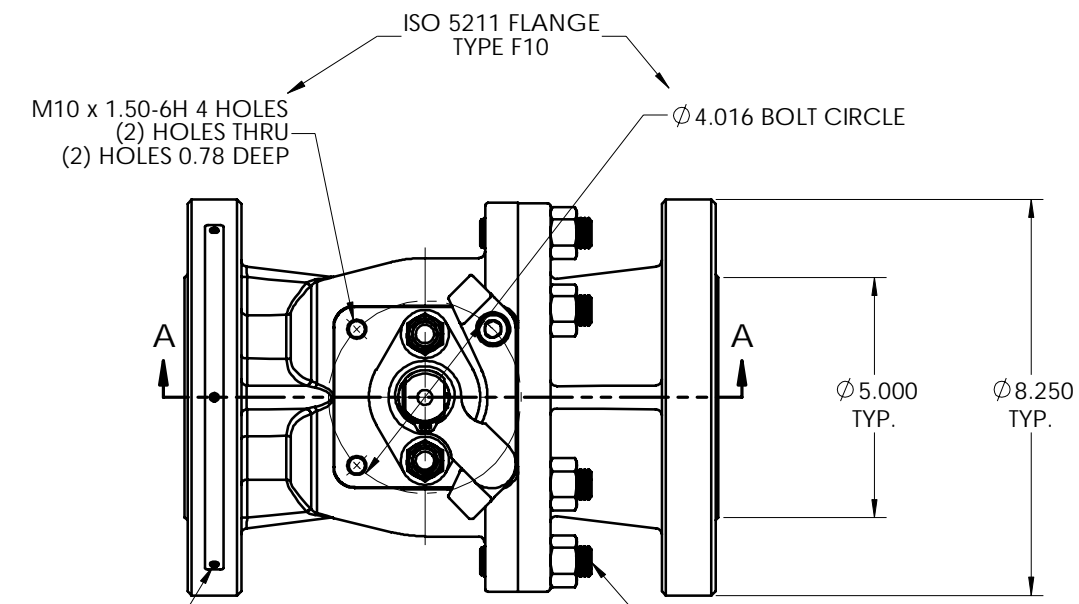


LET	ECN	REVISION	DRAWN	APPROVED	DATE
A	44414	SEE ECN FOR CHANGES	KML	PJD	8-23-18

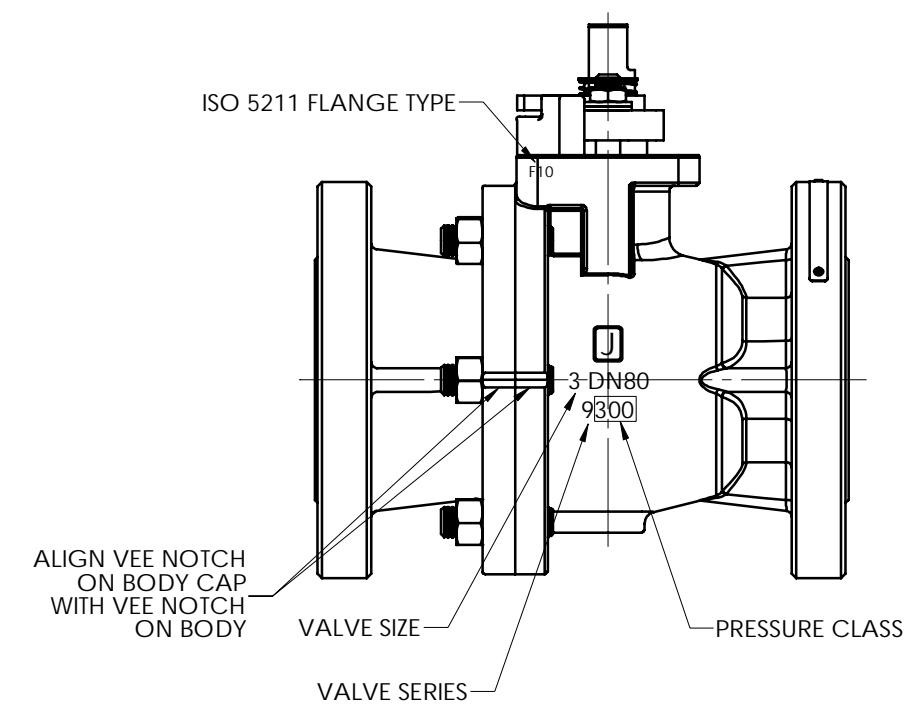
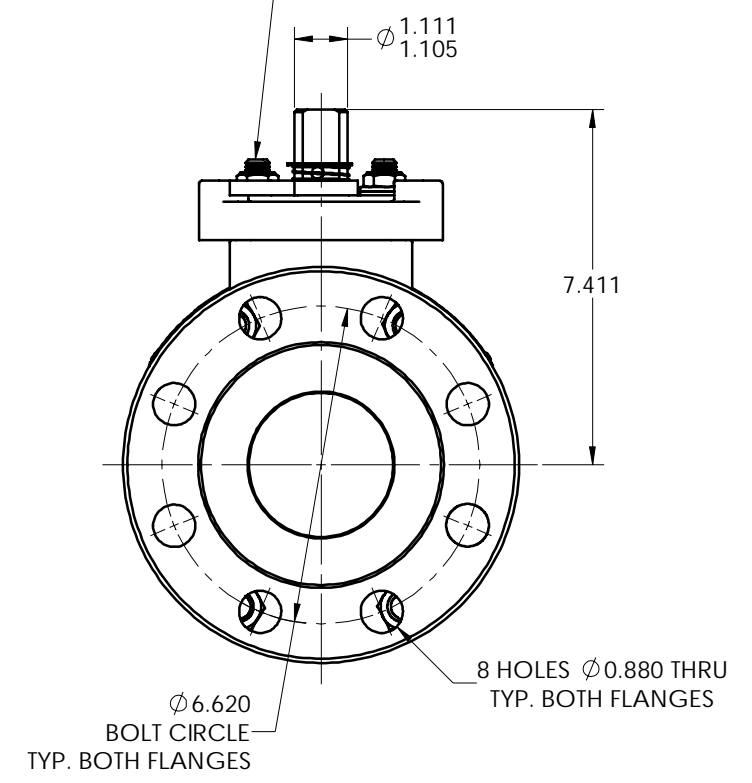
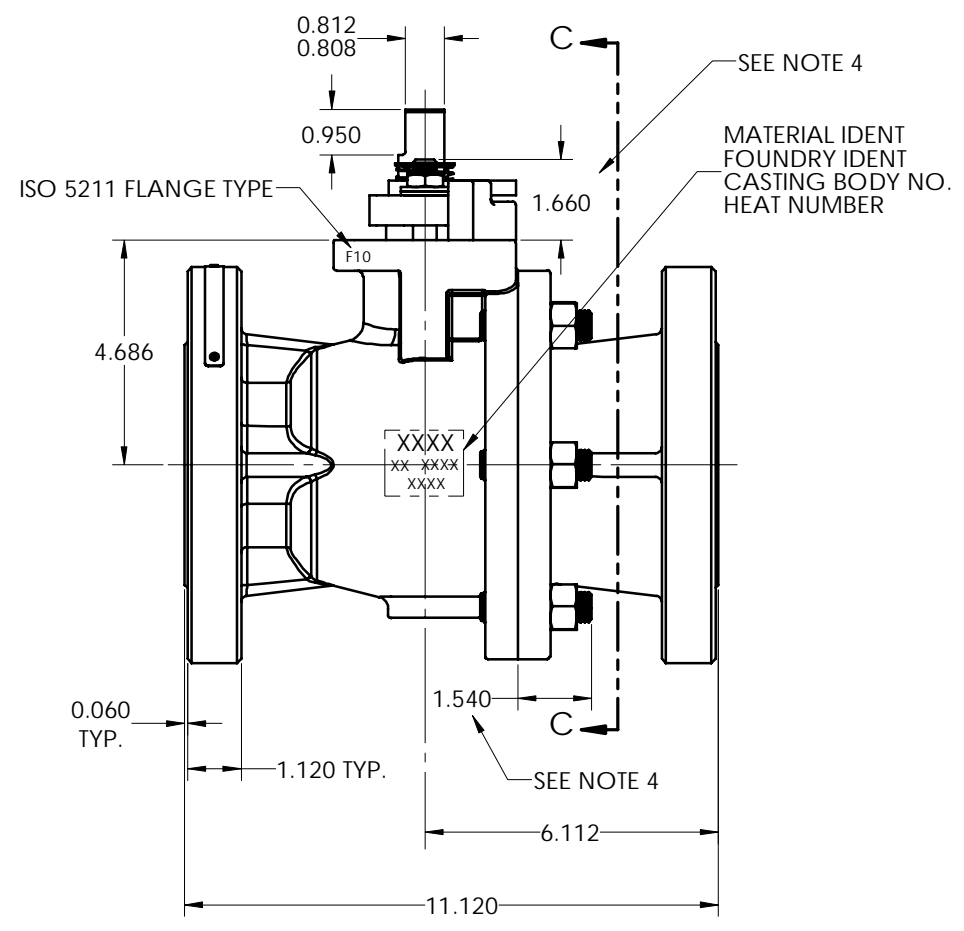


- NOTES:
- ATTACH IDENTIFICATION TAG PER JS-115.
 - FOR INSTALLATION, MAINTENANCE & OPERATING INSTRUCTIONS SEE IMO-226.
 - WHERE IDENTIFICATION APPEARS ON NUT OR STUD FACE, ASSEMBLE WITH IDENTIFICATION ALWAYS VISIBLE.
 - STUD HEIGHT IS ONLY APPLICABLE WHEN USING CONTINUOUS THREADED STUDS. WHEN USING CONTINUOUS THREADED STUDS, USE LOCTITE #271 ON STUD THREADS INTO BODY PER JSA-34. DOUBLE ENDED STUDS DO NOT REQUIRE LOCTITE.
 - DIMENSIONS ARE IN INCHES.
 - SEE INSTRUCTIONAL DRAWING I-1774 FOR HANDLE OPTIONS AND DIMENSIONS.
 - DOUBLE ENDED STUDS MAY BE SUBSTITUTED WITH CONTINUOUS THREADED STUDS IN THE SAME MATERIAL. APPROVED CONTINUOUS THREADED STUD SUBSTITUTIONS ARE SHOWN ON INSTRUCTIONAL DRAWING, I-1783.

SEE NOTE 1

LUBRICATE STUD THREADS AND BOTTOM FACE OF NUT PER JSA-01 OR A COMPATIBLE LUBRICANT FOR THE GIVEN VALVE (SEE NOTE 3) TORQUE NUT PER TABLE ON SHEET 2

LUBRICATE STUD THREADS AND BOTTOM FACE OF NUT PER JSA-01 OR A COMPATIBLE LUBRICANT FOR THE GIVEN VALVE (SEE NOTE 3) TORQUE NUT TO 8 FT.-LBS.

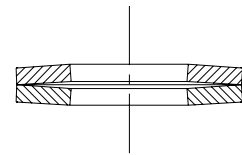


THIS DRAWING AND ALL INFORMATION CONTAINED HEREIN ARE THE PROPERTY OF METSO AND ARE NOT TO BE USED EXCEPT AS AUTHORIZED IN WRITING BY METSO	SPECIFICATIONS TO BE USED IN CONJUNCTION WITH THIS DRAWING JSA-01, JST-02 JSA-10, JSA-17 JSA-34, JSA-85 JS-115 IMO-226	MAKE FROM PART NO.	RESTRICTED	
	TITLE: VALVE ASSEMBLY 3" SERIES 9300RR MODEL C FULL BORE ASME CLASS 300 FLANGED BALL VALVE	DRAWN: PJD DATE: 6/22/15	APPVD: KAS DATE: 7/1/15	REV: A
© 2019 Metso		SIZE: D	DWG NO: 5574	REV: A

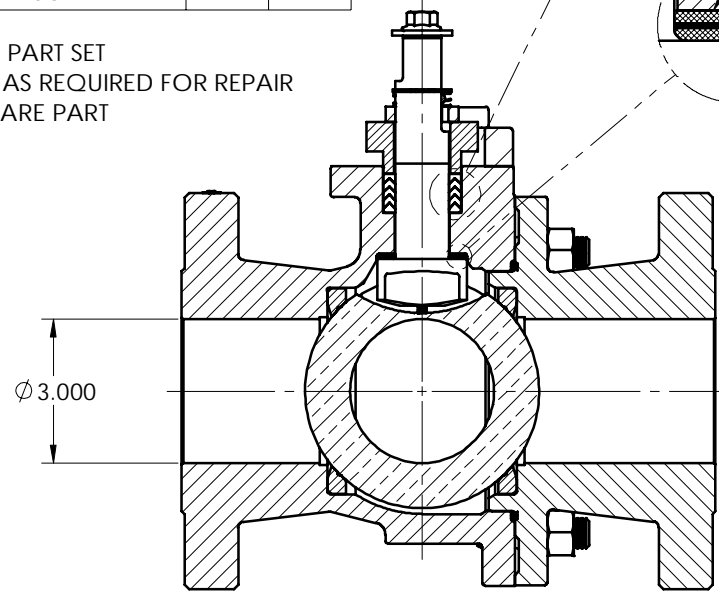
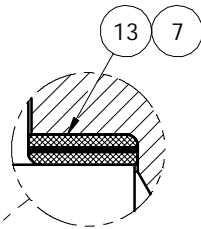
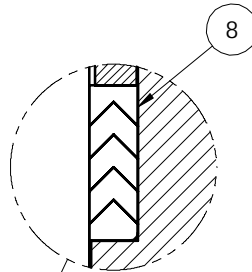
SHREWSBURY, MASSACHUSETTS

ITEM NO.	DESCRIPTION	QTY.	SPARE PART
1	BODY	1	N/A
2	BODY CAP	1	N/A
3	BALL	1	B
4	STEM	1	B
5	SEAT	2	A
6	BODY SEAL	1	A
7	SECONDARY STEM SEAL	1	A
8	STEM SEAL	1	A
13	STEM BEARING	2	A
16	HEX. HEAD CAP SCREW	1	B
17	HANDLE (SEE NOTE 6)	1	B
19	FLAT WASHER	1	B
20	COMPRESSION PLATE	1	B
22	IDENTIFICATION TAG	1	N/A
23	POP RIVET	3	N/A
29	BONNET STUD	2	B
30	BONNET STUD NUT (ESNA)	2	B
31	DISC SPRING	4	B
32	BODY STUD	6	B
33	BODY STUD NUT	6	B
70	TOP GROUNDING SPRING	1	B
71	BOTTOM GROUNDING SPRING	1	B
72	RETAINING RING	1	B
79	TRAVEL STOP	1	B
80	INDICATOR STOP	1	B
81	SOCKET HEAD CAP SCREW	2	B

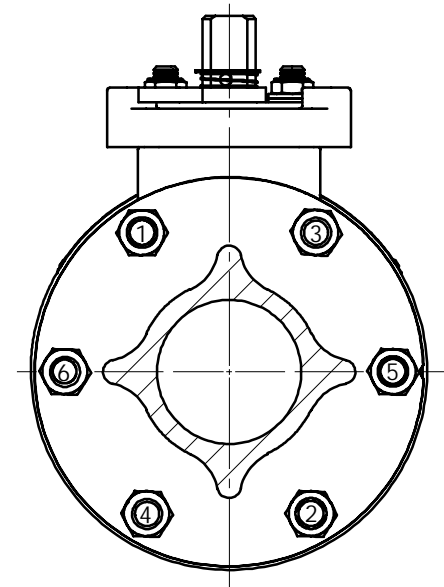
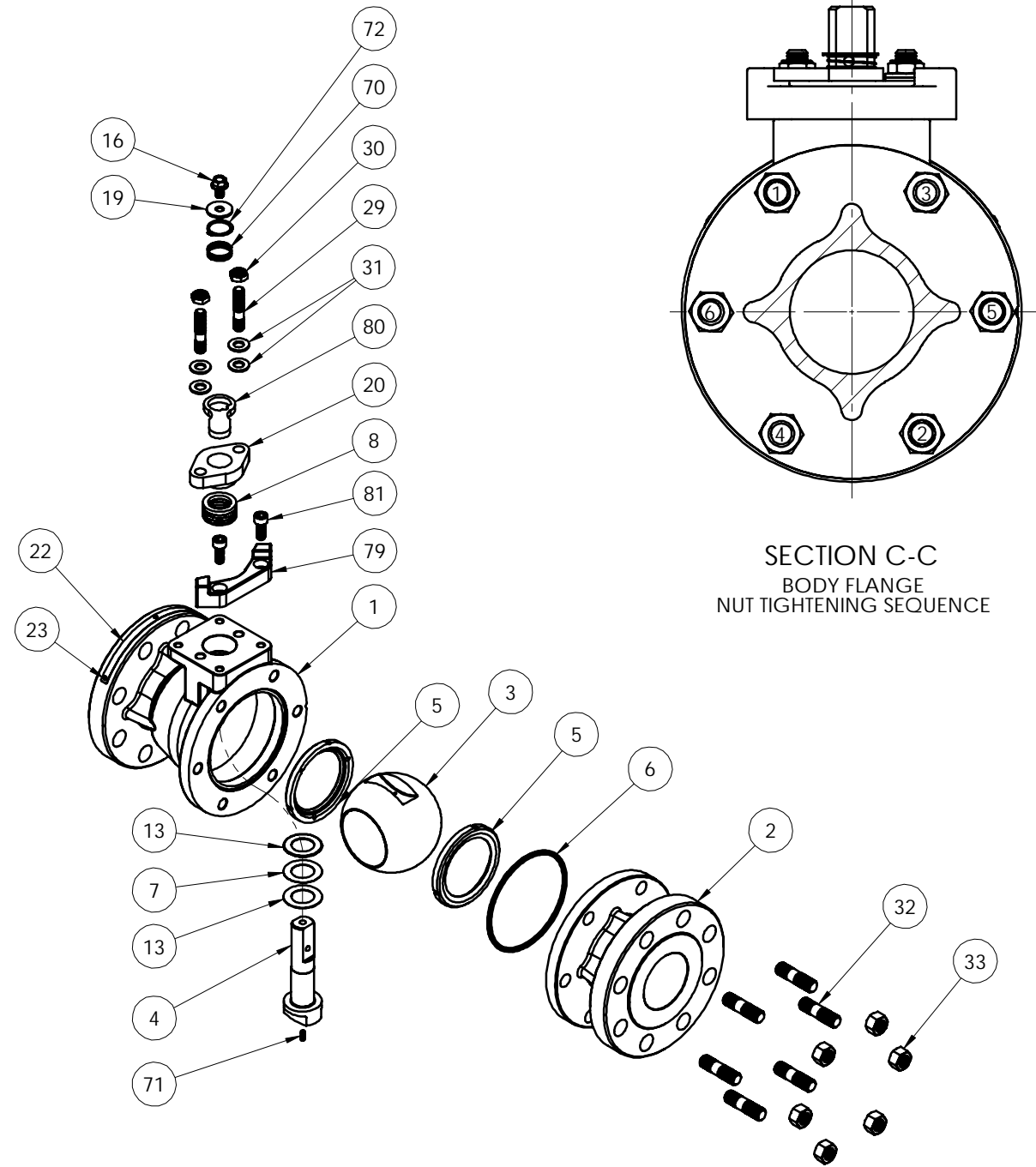
A= PART SUPPLIED IN SPARE PART SET
 B= PART MAY BE ORDERED AS REQUIRED FOR REPAIR
 N/A= NOT AVAILABLE AS A SPARE PART



PROPER DISC SPRING
ARRANGEMENT
(UNCOMPRESSED)



SECTION A-A



SECTION C-C
BODY FLANGE
NUT TIGHTENING SEQUENCE

BODY STUD NUT ASSEMBLY TORQUE (FT.-LBS.)

MAT'L. CODE	MAT'L. SPEC.	MAT'L. IDENT. STUD	MAT'L. IDENT. NUT	BODY STUD NUT ITEM 33
19	A-193 GR. B7M	<u>B7M</u>	2HM OR 2HMB	110 - 140
20	A-193 GR. B7	B7	2H OR 2HB	150 - 190
31	A-193 GR. B8	<u>B8, B8C OR B8T</u>	<u>8B, 8CB OR 8TB</u>	161 - 197
35	B-473 CARPENTER 20Cb-3	A20	A20	85 - 105
71	QQ-N-286	K	K	115 - 141

(A)

THIS DRAWING AND ALL INFORMATION CONTAINED HEREIN ARE THE PROPERTY OF METSO AND ARE NOT TO BE USED EXCEPT AS AUTHORIZED IN WRITING BY METSO

SPECIFICATIONS TO BE USED IN CONJUNCTION WITH THIS DRAWING
 JSA-01, JST-02
 JSA-10, JSA-17
 JSA-34, JSA-85
 JS-115
 IMO-226

MAKE FROM PART NO.

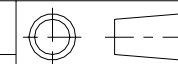
RESTRICTED

TITLE: VALVE ASSEMBLY
 3" SERIES 9300RR MODEL C
 FULL BORE ASME CLASS 300
 FLANGED BALL VALVE

DRAWN: PJD DATE: 6/22/15
 APPVD: KAS DATE: 7/1/15

SIZE: D DWG NO: 5574 REV: A

© 2019 Metso



metso
SHREWSBURY, MASSACHUSETTS